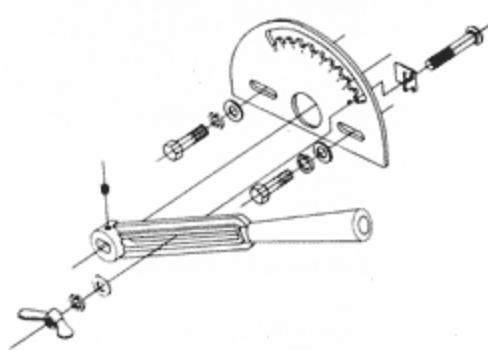


**Accessories:  
Manual Positioning & Control**

PDC'S Combination 10 Position/Infinite Throttling & Locking Lever Assembly offers both types of the most commonly requested manual actuators in one unit.

The Lever may be positively locked in the opened, closed or any of eight intermediate positions by engaging the locking bolt in one of ten slotted sections of the indicating plate and securing the bolt.

For applications requiring finer control, the disc may be positioned at an infinite number of points from opened ( $90^\circ$ ) to closed ( $0^\circ$ ) by moving the lever along the slot in the indicating plate to the desired degree of opening and securing the friction lock.



## PDC Automation Packages

Utilizing our universal system of brackets and linkages, PDC will furnish, mount and completely pipe a wide selection of actuators as well as other control accessories as required.

The list below indicates only the most frequently requested actuators and control accessories. PDC can furnish others if desired and specified by the customer.



### Actuators

---

ADVANCE  
ALECTO AUTOMATION  
ANDCO  
AUMA  
AUTOMAX  
BARBER COLMAN  
BAY STATE  
BECK  
BELIMO  
BELLOFRAM  
BETTIS  
BRAY  
CASHCO  
CENTERLINE  
CHICAGO CYLINDER  
CONOFLOW  
CONTROMATICS  
DELTROL  
DEMCO  
DYNATORQUE  
EL-O-MATIC  
FISHER

FLO-TORK  
HILLS-McANNA  
HONEYWELL  
HYTORK  
ITT GRINNEL  
INVALCO  
JAMESBURY  
JOHNSON CONTROLS  
JORDAN  
K&M  
KEYSTONE  
KINETROL  
KMC  
K-TORQ  
LEEDS & NORTHRUP  
LIMITORQUE  
MASTERGEAR  
MASON EILAN  
MATRYX  
NELES JAMESBURY  
NEPTRONICS

NORTH AMERICAN  
OHIO OSCILLATOR  
PARKER HANNIFEN  
PAXTON  
PENN CONTROLS  
POWERS  
RAMCON  
RCS  
REMOTE CONTROL  
REXA  
ROBERTSHAW  
ROTORK  
SHEFFER  
SIEMENS  
STAEFA  
TRUTORQ  
UNITORQ  
VALVCON  
WATTS  
WESTRAN  
WORCESTER

## Positioners

---

ACCORD  
BAILEY  
BARBER COLMAN  
BELLOFRAM  
CONOFLOW  
EL-O-MATIC  
FISHER  
HONEYWELL  
HYTORK

ICOT  
JAMESBURY  
JOHNSON CONTROLS  
KINETROL  
LIMITORQUE  
MASONEILAN  
MOORE  
MONITEUR  
NEPTRONICS

POWERS  
RAMCON  
RCS  
ROBERTSHAW  
ROTORK  
VALVCON  
VCR  
VRC  
WATTS  
WORCESTER

## Limit Switches

---

ACCORD  
ALLEN BRADLEY  
GENERAL ELECTRIC  
GO

MICRO SWITCH  
MONITEUR  
NAMCO  
PROXIMITY

[PDC EXCEL](#)  
STONEL  
WESTLOCK

## Solenoid Valves

---

ASCO  
GOYEN  
HONEYWELL

MAC  
MAGNATROL  
PARKER

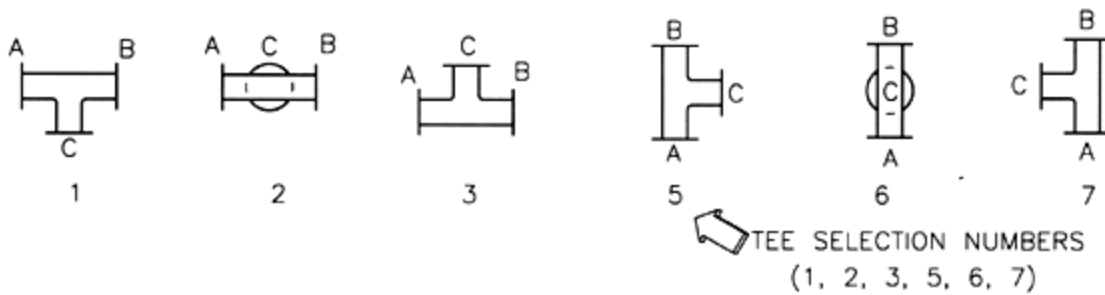
ROSS  
SKINNER

**PDC 3-Way Assemblies  
Metal or Rubber Seated  
125/150 Lb. Flanging**



PDC's 3-Way Assemblies are shipped as a complete unit, assembled, mounted and tested, ready for field installation. Two valves are mounted on a 125 lb. cast iron tee; one valve complete with power actuator the second valve controlled through connecting slave linkage. The valves are normally linked so that as one valve opens the other valve closes. The tee arrangement desired should be specified by indicating the appropriate tee position (1 through 7 below), and the placement of both the power valve and slave valve respectively as on:

**Plan View**



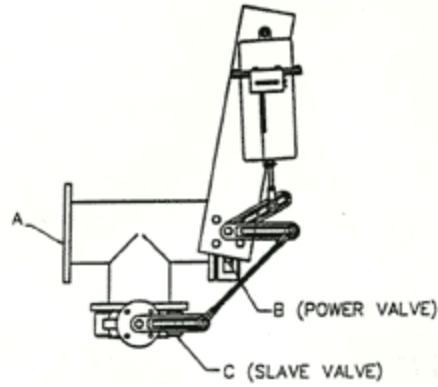
**Selection Guidelines**

1. Each port on tee is designated by A, B or C.
2. All tee arrangement numbers are based on plan view of the tee (i.e. looking down on tee and top of valve shaft as shown in example below).
3. Power valve (valve with actuator) is designated by the first letter after the tee selection number. Either A, B, or C.
4. All tee arrangements are based on the bracket for the power valve to be positioned at 12:00 o'clock in the plan view.

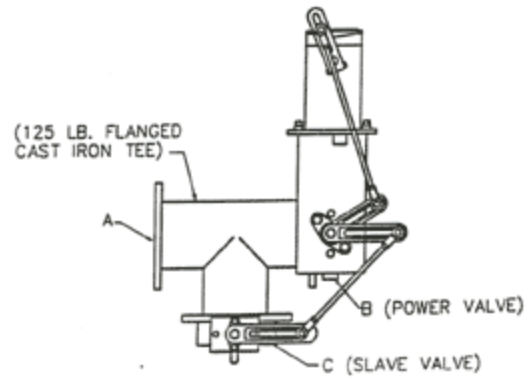
As an *example*, the plan views shown below are tee arrangement:

1. Tee Selection Number
- B. Power Valve
- C. Slave Valve

**Plan View: Pneumatic**

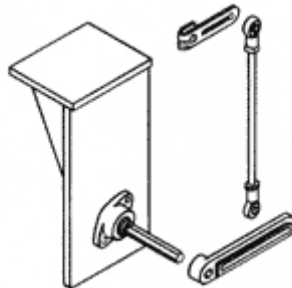


**Plan View: Electric**

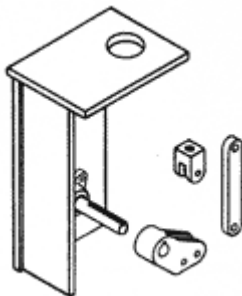


**Accessories:  
PDC Universal Brackets & Linkages**

PDC offers a selection of "Universal" brackets and linkage with which any of the electric or pneumatic actuators in use today can be mounted to PDC Valves. The "Universal" features of design incorporated in our brackets and linkage, combined with a versatile selection of shaft end configurations, insure simple, precise, and economical mounting of actuators to PDC Valves, either at the factory or in the field.



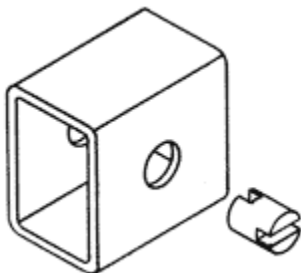
**Type 1**  
Designed for mounting crank arm type electric actuators.



**Type 2**  
Designed for nose mounting spring return diaphragm or cylinder style pneumatic actuators.



**Type 3**  
Designed for pivot mounting damper piston or cylinder style actuators

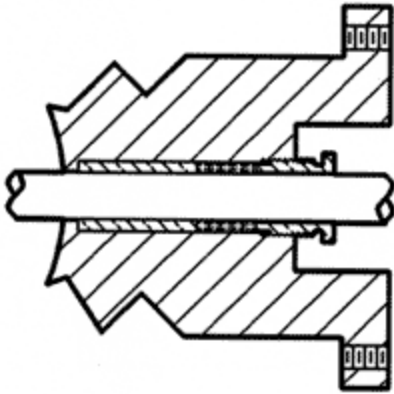


**Type 4**  
Designed for mounting direct coupling electric or pneumatic actuators.



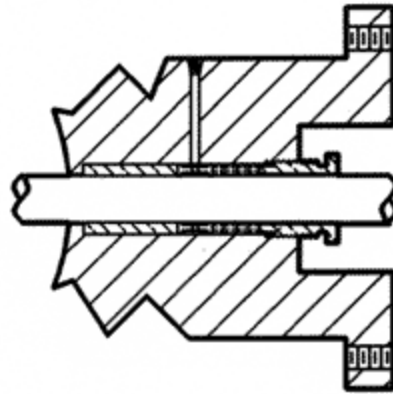
**Type 5**  
Designed for mounting direct coupling actuators to direct fitting PDC shaft.

## Types of Stuffing Boxes



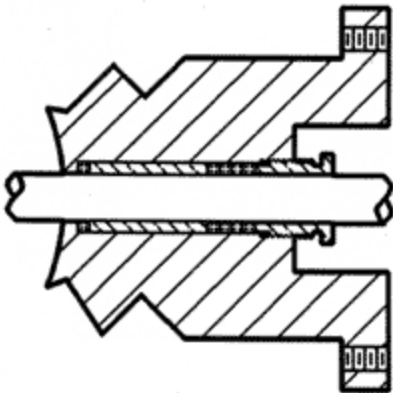
### Standard

Suitable for most applications, this type is furnished as standard. Packing can be replaced without removal of the operator in most cases.



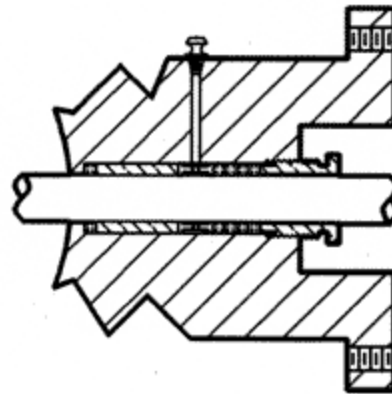
### Purging Type

Lantern Gland and a pipe connection can provide purging of deposits around valve shaft. Recommended for valves handling fluids with entrained solids and where fluids condense or solidify with loss of temperature.



### Dirty Service

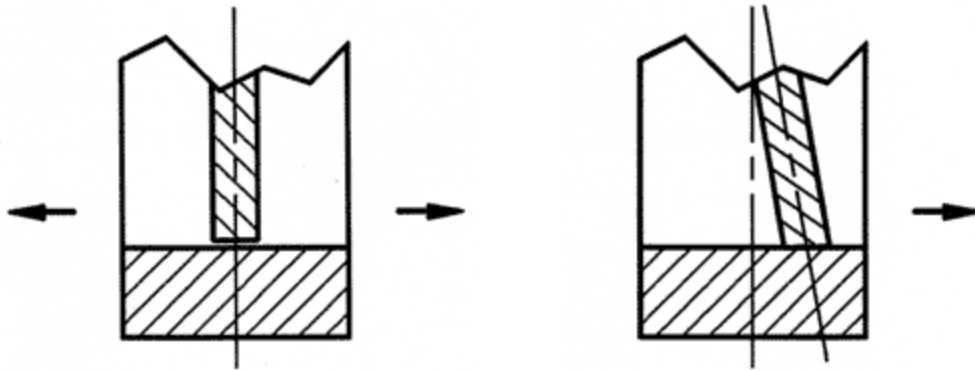
Similar to standard stuffing box but an addition of a wiper ring of packing before the inboard bushing to prevent contaminates from galling up surfaces between the bushing and the shaft.



### Lubricating Type

When service requires additional lubricant, a lantern gland and a pipe connection can be furnished. Additional packing rings below gland prevent lubricant from entering the stream.

**Seat Options**

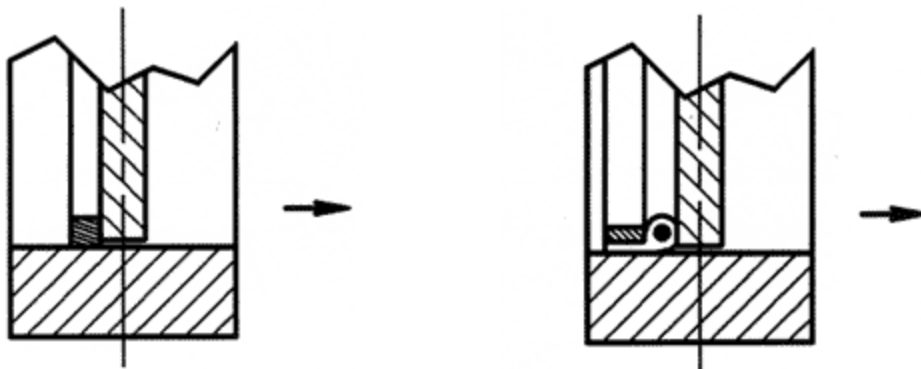


**Swing Thru**

Suitable for most applications, this type is furnished as standard. Good for clean or dirty service, any temperature range. Clearance depends upon temperature. (Available in all sizes.)

**Angle**

Clockwise to close is standard. Suitable for minimum leakage where service conditions are clean, and temperature is under 500°F, (Available up to 30 inch sizes.)



**Metal Step**

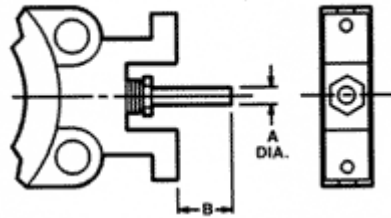
Clockwise to close is standard. Suitable for minimum leakage requirements above 500°F, provided service conditions are clean. (Available in all sizes.)

**Tadpole Step**

Clockwise to close is standard. Suitable for minimum leakage requirements up to 1200°F, depending on various materials available, and provided service conditions are clean. Slightly better shut-off than metal step seat. (Available in sizes starting at 6" and up.)

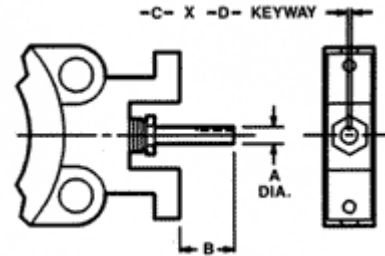
**Shaft Options**

**Round Shaft**



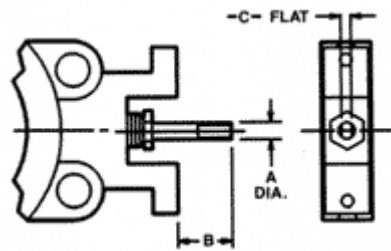
VALVE SIZE	A	B
2" - 8"(L)	1/2	1-1/2
8" (H) - 14"	3/4	1-1/2
16" - 24"	1	3
26" - 30"	1-1/4	3
32" - 38"	1-1/2	3
40" - 48"	1-3/4	3
50" - 58"	2	3
60"	2-1/4	3

**Keyed Shaft**



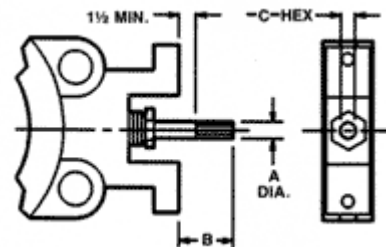
VALVE SIZE	A	B	C	D
2" - 8"(L)	1/2	5-7/8	1/8	1/16
8" (H) - 14"	3/4	6	3/16	3/32
16" - 24"	1	6-1/8	1/4	1/8
26" - 30"	1-1/4	6-1/2	5/16	5/32
32" - 38"	1-1/2	6-1/2	3/8	3/16
40" - 48"	1-3/4	6-1/2	3/8	3/16
50" - 58"	2	6-1/2	1/2	1/4
60"	2-1/4	6-1/2	1/2	1/4

**Flatted Shaft**



VALVE SIZE	A	B	C
2" - 8"(L)	1/2	1-1/4	11/32
8" (H) - 14"	3/4	1-1/4	17/32
16" - 24"	1	1-1/4	5/8
26" - 30"	1-1/4	1-1/2	7/8
32" - 38"	1-1/2	1-3/4	1-1/8
40" - 48"	1-3/4	2	1-1/4
50" - 58"	2	2-1/2	1-3/8
60"	2-1/4	3	1-5/8

















**Hex Shaft**





VALVE SIZE	A	B	C
2" - 3"	1/2	5-1/8	13/32
4" - 8"(L)	1/2	5-1/4	13/32
8" (H) - 14"	3/4	5-3/4	5/8
16" - 24"	1	5-3/4	3/4





	Process or Line Temperature									
	Up to 250° F	450° F	500° F	600° F	650° F	700° F	800° F	900° F	1000° F	1200° F
<b>Bushing</b>										
<b>Bronze</b>										
<b>Graphited Bronze</b>										
<b>Glass Filled TEFLON®</b>										
<b>Metcar</b>										

	Process or Line Temperature									
	Up to 250° F	450° F	500° F	600° F	650° F	700° F	800° F	900° F	1000° F	1200° F
<b>Packing Nuts</b>										
<b>Brass</b>										
<b>316 Stainless Steel</b>	